



# FILCONS 50 $\mu$ m

Using CTSV FILCONS with different mesh sizes, you can easily remove cell clumps and large particles from your sample after tissue dissociation and ensure that you have a uniform single-cell suspension.

The strainers have smart features, such as:

- Compatibility with 5 (FILCONS) and 50 ml (FILCONS MAX) conical tubes
- Prevent clogging with optimized ventilation
- Compact size for sterile handling
- Syringe fitting for bigger volumes, cup type for smaller volumes



**050-47N-S**

**150-47N-S**



**WWW.CTSV.BIZ**

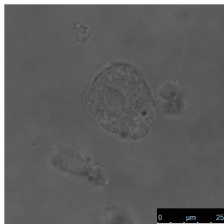


# FILCONS 50 $\mu$ m

## APPLICATION TABLE

50  $\mu$ m

STRAINER TARGET	Hepatocytes, Skeletal muscle cells, Adipocytes, Myocytes, Fibroblasts
TISSUES	Liver, Muscle, Heart, Adipose, Dermis, Connective tissue
DISSOCIATION SYSTEM/DEVICE	Medicons cod. 79400 (50 $\mu$ m cut), Medicons-P cod. 79700 (70 $\mu$ m cut)



Liver



[WWW.CTSV.BIZ](http://WWW.CTSV.BIZ)