



FILCONS 30 μ m

Using CTSV FILCONS with different mesh sizes, you can easily remove cell clumps and large particles from your sample after tissue dissociation and ensure that you have a uniform single-cell suspension.

The strainers have smart features, such as:

- Compatibility with 5 (FILCONS) and 50 ml (FILCONS MAX) conical tubes
- Prevent clogging with optimized ventilation
- Compact size for sterile handling
- Syringe fitting for bigger volumes, cup type for smaller volumes



030-33N-S

130-33N-S



WWW.CTSV.BIZ



FILCONS 30 μ m

APPLICATION TABLE

30 μ m

STRAINER TARGET

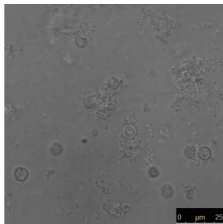
Epithelial cells, Smooth muscle cells, Unicellular algae, Unicellular parasites

TISSUES

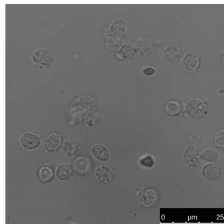
Lymph node, Spleen, Kidney, Small intestine, Esophagus, Unicellular algae, Unicellular parasites such as protozoa and plasmodium vivax

DISSOCIATION SYSTEM/DEVICE

Medicons cod. 79400 (50 μ m cut), Medicons-P cod. 79700 (70 μ m cut)



Kidney



Spleen



WWW.CTSV.BIZ